
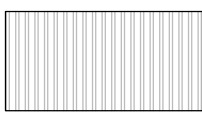
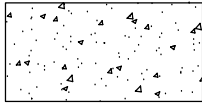

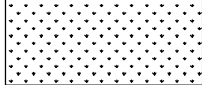


### SITE PLAN GENERAL NOTES

(SHEET A1.0)

- PROPOSED BUILDING ELEVATION SHOWN AS:  MAIN FLOOR FINISHED FLOOR  
EL. = 100'-0"
- ALL GROUND SHALL PITCH AWAY FROM BUILDING AT A MINIMUM OF 4% +/- UNLESS NOTED OTHERWISE.  
MAINTAIN POSITIVE DRAINAGE AWAY FROM BUILDING.
- CONCRETE SURFACES SHALL SLOPE @ 1/8" = 1'-0" MINIMUM  
AWAY FROM BUILDING UNLESS SPECIFICALLY NOTED OTHERWISE.

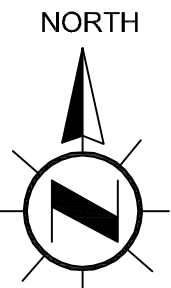
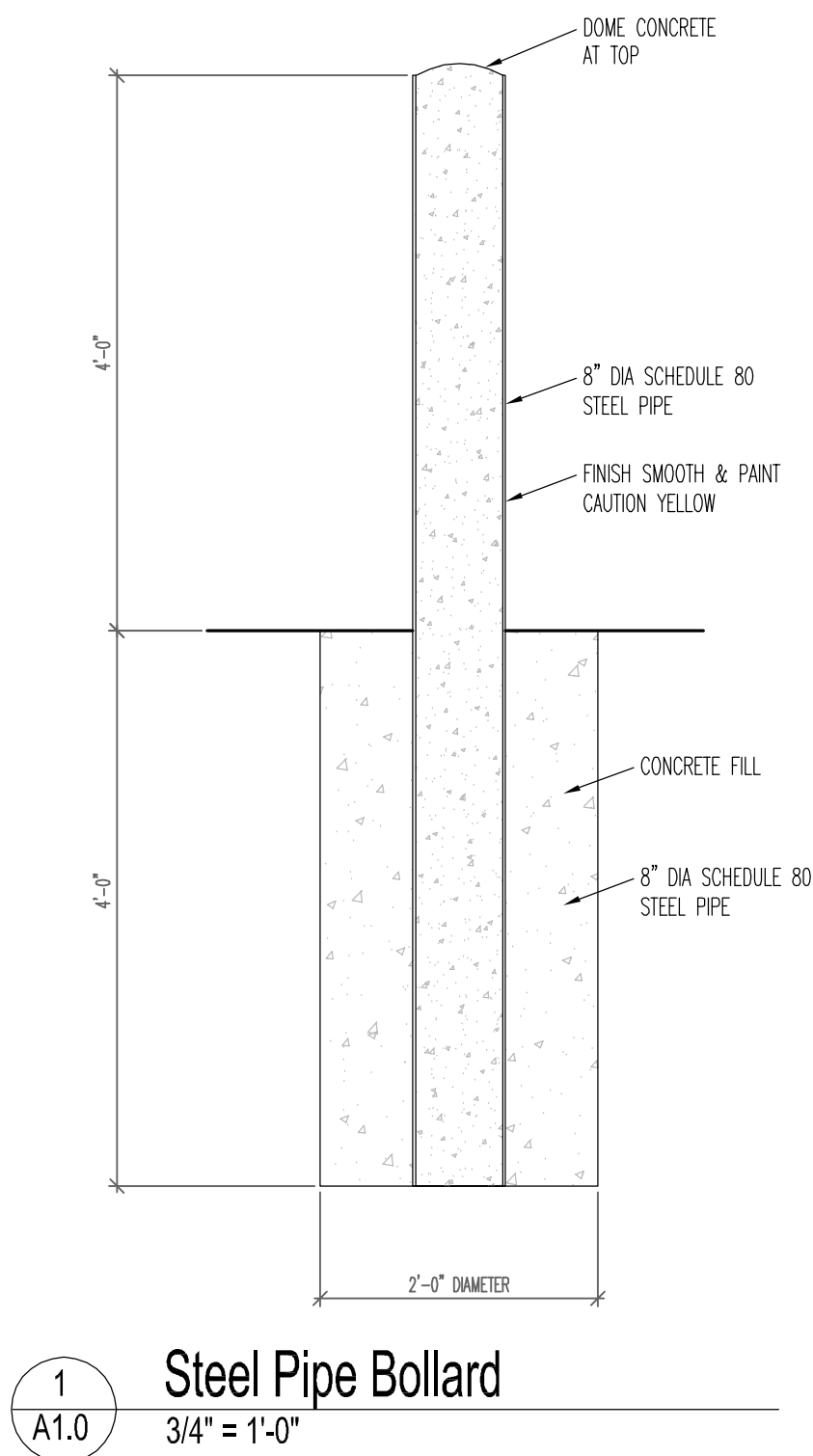
### Legend

- |                                                                                     |                                                     |
|-------------------------------------------------------------------------------------|-----------------------------------------------------|
|  | NEW BUILDING                                        |
|  | NEW CONCRETE PAVING                                 |
|  | NEW #3 LANDSCAPE ROCK OVER HEAVY-DUTY WEED BARRIER. |
|  | NEW GRASS SEED & MULCH                              |

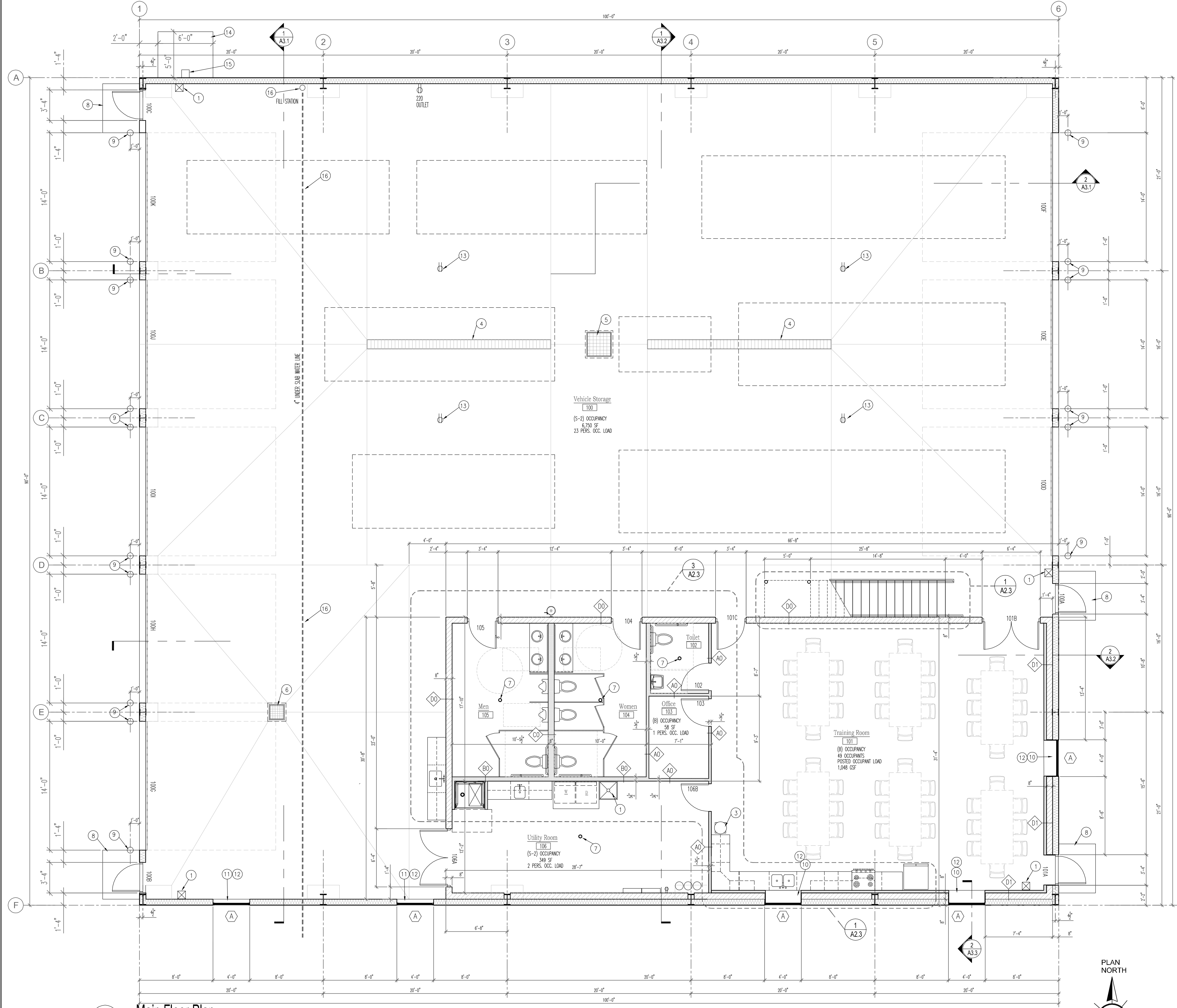
### KEYED NOTES (CONT'D)

(SHEET A1.0)

- NEW CONCRETE PAVING (4000 PSI), WIDTH AS SHOWN, 6" THICK W/ FIBERMESH & #4 REBAR REINFORCING @ 18" C/C BOTH WAYS OVER 12" COMPACTED CRUSHED LIMESTONE. TOP OF FINISHED SURFACE FLUSH W/ FINISHED FLOOR AND / OR ADJACENT SOIL. INSTALL CONTROL JOINTS PER STANDARD PRACTICE. BROOM & TOOL FINISH. DOWELL ATTACH PAVING INTO ADJACENT BUILDING FOUNDATION- 18" LENGTH #5 DOWELS @ 24" C/C. SLOPE SURFACE AT 1/8" PER FT. AWAY FROM BUILDING MINIMUM
- CONCRETE STOOP, POUR FLUSH W/ INTERIOR FINISHED FLOOR HEIGHT / FLUSH WITH PAVING. SLOPE AT 1/8" PER FT. AWAY FROM BUILDING. SEE ALSO STRUCTURAL PLANS & DETAILS. 6" THICK W/ FIBERMESH TO MATCH ADJACENT DRIVEWAY
- NEW CONCRETE PAVING (4000 PSI), WIDTH AS SHOWN, 4" THICK W/ FIBERMESH & WELDED WIRE MESH OVER 8" COMPACTED CRUSHED LIMESTONE. TOP OF FINISHED SURFACE FLUSH W/ FINISHED FLOOR AND / OR ADJACENT SOIL. INSTALL CONTROL JOINTS PER STANDARD PRACTICE. BROOM & TOOL FINISH. DOWELL ATTACH PAVING INTO ADJACENT BUILDING FOUNDATION- 18" LENGTH #5 DOWELS @ 24" C/C. SLOPE SURFACE AT 1/8" PER FT. AWAY FROM BUILDING MINIMUM
- CONCRETE STOOP, POUR FLUSH W/ INTERIOR FINISHED FLOOR HEIGHT / FLUSH WITH PAVING. SLOPE AT 1/8" PER FT. AWAY FROM BUILDING. SEE ALSO STRUCTURAL PLANS & DETAILS. 4" THICK W/ FIBERMESH TO MATCH ADJACENT SIDEWALK.
- 8" SCHEDULE 80 STEEL PIPE BOLLARD. SEE DETAIL 2 / A1.0
- DOWNSPOUT ONTO 12" x 24" PRECAST CONCRETE SPLASH BLOCK
- NOT USED
- NO. 2 WASHED STONE OVER HEAVY-DUTY FABRIC WEED BARRIER.
- ADD ALTERNATE #1: 6'-0" HEIGHT WHITE VINYL FENCING



1  
A1.0  
Site Layout Plan  
1" = 16'-0"



1  
A2.0  
Main Floor Plan  
3/16" = 1'-0"

## GENERAL NOTES

SHEET A2.0

- CONTRACTOR TO FIELD VERIFY ALL DIMENSIONS. NOTIFY ARCHITECT OF ALL SIGNIFICANT DISCREPANCIES
- DIMENSIONS TYPICAL: DIMENSION LINES ARE LOCATED FROM FACE-OF-STUD -OR- TO FACE-OF-MASONRY- TYPICAL.
- REFER TO STRUCTURAL DRAWINGS FOR LOCATIONS OF ALL FOOTINGS, FOUNDATION WALLS, BEAMS, AND HEADERS.
- PROPOSED AND EXISTING ELEVATIONS ARE SHOWN AS:  
MAIN LEVEL F.F.E.  
EL. = 100'-0"
- CONSTRUCTION SHALL BE IN ACCORDANCE WITH STATE AND LOCAL CODES.
- ALL DOORS TO BE EQUIPPED WITH ADA-LEVERSET HARDWARE
- ALL EXTERIOR DOOR THRESHOLDS SHALL BE NO MORE THAN 1/2" IN HEIGHT.
- VERIFY ALL EXISTING CONDITIONS, DIMENSIONS, AND ALIGNMENT OF WALLS. BRING ANY DISCREPANCIES TO THE ARCHITECTS ATTENTION PRIOR TO START OF FABRICATION/CONSTRUCTION.
- PROVIDE 5/8" GYPSUM BOARD AT ALL LOCATIONS UNLESS OTHERWISE NOTED. PROVIDE 5/8" MOISTURE RESISTANT GYPSUM BOARD AT PLUMBING PARTITIONS AND PARTITION FACE WITHIN 6'- 0" OF ALL PLUMBING FIXTURES. PROVIDE CEMENT PLASTER BOARD AS BACK-UP AT ALL CERAMIC WALL TILE LOCATIONS.
- HOLD 5/8" CLEARANCE BETWEEN FLOOR AND GYPSUM BOARD. FILL GAP BETWEEN BOTTOM EDGE OF GYPSUM BOARD AND FLOOR WITH MOISTURE RESISTANT MASTIC CAULKING. STRIKE COMPOUND SMOOTH AND FLUSH WITH FACE OF PARTITION. REMOVE EXCESS MASTIC CAULKING FROM PARTITION AND FLOOR.
- ALL VINYL OR FABRIC WALL COVERING AT CORRIDOR CORNER LOCATIONS TO RECEIVE A CLEAR PLASTIC CORNER GUARD TO A HEIGHT OF 8' - 0" A.F.F. (IPC INSTITUTIONAL PRODUCTS CORP #8118 OR APPROVED EQUAL) UNLESS OTHER PROTECTION IS SPECIFIED.
- CHANGES IN FLOOR MATERIALS SHALL BE LOCATED AT THE CENTERLINE OF DOORS UNLESS NOTED OTHERWISE.
- VERIFY LOCATION OF ACCESS PANELS WITH MECHANICAL AND ELECTRICAL ITEMS.
- SEAL PENETRATIONS IN FIRE RATED ASSEMBLIES AND SMOKE BARRIERS TO MEET REQUIRED RATINGS. UTILIZE UL APPROVED METHODS.
- DURING CONSTRUCTION, AREA SHALL BE KEPT BROOM CLEAN AND FREE OF DEBRIS.
- ALL PENETRATIONS OF EXTERIOR WALL ARE TO BE MADE AIR TIGHT.
- ALL PENETRATIONS OF FIRE-RATED WALLS TO BE FIRE-STOPPED WITH CODE COMPLIANT / U.L. LISTED FIRE CAULK AND/OR FIRESTOPPING
- ALL PENETRATIONS OF EXTERIOR WALL ARE TO BE MADE AIR TIGHT.
- PUBLIC RESTROOMS SHALL BE COVERED WITH SMOOTH, HARD, NONABSORBENT MATERIALS EXTENDING A MINIMUM OF 6" ABOVE FLOOR LEVEL. WALLS WITHIN 2 FT. OF URINALS OR WATER CLOSETS SHALL BE COVERED A MINIMUM OF 4 FT. ABOVE FLOOR LEVEL.
- ROOM(S) WITH A MOP BASIN OR UTILITY SINK SHALL HAVE AN EXHAUST FAN WHICH RUNS CONTINUOUSLY WHILE THE BUILDING IS OCCUPIED.
- ALL EXTERIOR DOOR THRESHOLDS SHALL BE NO MORE THAN 1/2" IN HEIGHT.
- CHANGES IN FLOOR MATERIALS SHALL BE LOCATED AT THE CENTERLINE OF DOORS UNLESS NOTED OTHERWISE.
- SEAL PENETRATIONS IN FIRE RATED ASSEMBLIES AND SMOKE BARRIERS TO MEET REQUIRED RATINGS. UTILIZE UL APPROVED METHODS.

## REFERENCE NOTES

- SEE DETAIL 2 / A2.1 FOR PARTITION TYPES
- SEE A2.1 FOR DOOR & FINISH SCHEDULES
- REFER TO STANDARD MOUNTING HEIGHTS, DET 3 / A2.2 FOR ADA MOUNTING HEIGHT DETAILS.
- REFER TO ELEVATIONS & DETAIL 5 / A3.0 FOR EXTERIOR WINDOW TYPES AND LOCATIONS.

## DIMENSION NOTES

- INTERIOR WALLS DIMENSIONED TO FACE OF STUD AND/OR FACE OF MASONRY

## KEYED NOTES

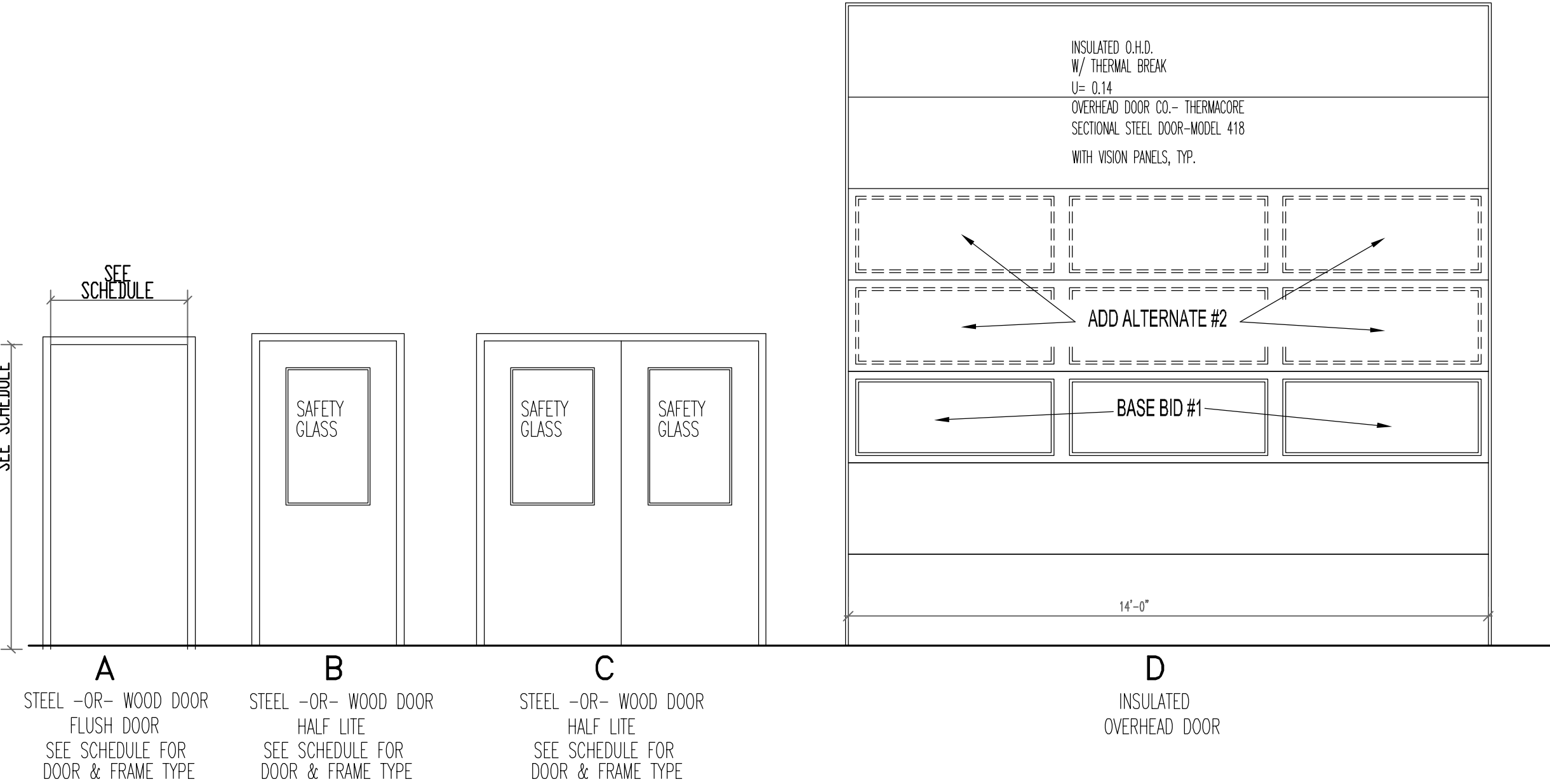
SHEET A2.0

- FIRE EXTINGUISHER CABINET, SURFACE-MOUNTED  
FIRE EXTINGUISHER: ORDINARY HAZARD- 2-A-B-C RATED  
WALL MOUNTING: TOP-OF-EXTINGUISHER  
Ø 42" ABOVE FINISHED FLOOR
- 24 x 24 FLOOR-MOUNTED SERVICE SINK
- WATER COOLER WATER DRINKING FACILITY
- CONTINUOUS TRENCH DRAIN
- 36" x 36"x 36" PRECAST CATCH BASIN WITH HEAVY-DUTY STEEL GRATE
- 24" x 24"x 24" PRECAST CATCH BASIN WITH HEAVY-DUTY STEEL GRATE
- FLOOR DRAIN
- CONCRETE STOOP. SEE STRUCTURAL
- 8" DIA SCHEDULE 80 STEEL PIPE BOLLARD, CONCRETE FILLED TO DOME TOP. PAINT CAUTION YELLOW. SEE DETAIL 2 / A1.0
- PAINTED 5/8" GYP BOARD HEAD & JAMBS
- PAINTED BRAKE METAL HEAD & JAMBS
- 1/2" THICKNESS CULTURED MARBLE SILL
- 20 AMP, CEILING-MOUNT OUTLET ON RETRACTABLE CORD REEL
- 4" THICK CONCRETE SLAB FOR EMERGENCY GENERATOR
- EMERGENCY GENERATOR ELECTRICAL BACKFEED BOX. CONNECT BACK TO MAIN PANEL. PROVIDE CODE-COMPLIANT SWITCH CONNECTION.
- PROVIDE 4" WATER LINE FROM MUNICIPAL SUPPLY TO LOCATION SHOWN FOR WATER TANKER TRUCK REFILLING STATION.

DOOR/ FRAME SCHEDULE										
DOOR NO.	DOOR					FRAME			HARDWARE GROUP	REMARKS
	SIZE	THICKNESS	MATERIAL	FINISH	TYPE:  U-CUT OR LOUVER	MATERIAL	FINISH	TYPE:  1 A2.1	SEE NOTES— BELOW	

MAIN FLOOR											
100A	3'-0" x 7'-0"	1-3/4"	STEEL	PAINT	B	-	STEEL	PAINT	B	E-1	EXTERIOR INSULATED
100B	3'-0" x 7'-0"	1-3/4"	STEEL	PAINT	B	-	STEEL	PAINT	B	E-1	EXTERIOR INSULATED
100C	3'-0" x 7'-0"	1-3/4"	STEEL	PAINT	B	-	STEEL	PAINT	B	E-1	EXTERIOR INSULATED
100D	14'w X 14'h				D						INSULATED SECTIONAL OVERHEAD DOOR
100E	14'w X 14'h				D						INSULATED SECTIONAL OVERHEAD DOOR
100F	14'w X 14'h				D						INSULATED SECTIONAL OVERHEAD DOOR
100G	14'w X 14'h				D						INSULATED SECTIONAL OVERHEAD DOOR
100H	14'w X 14'h				D						INSULATED SECTIONAL OVERHEAD DOOR
100I	14'w X 14'h				D						INSULATED SECTIONAL OVERHEAD DOOR
100J	14'w X 14'h				D						INSULATED SECTIONAL OVERHEAD DOOR
100K	14'w X 14'h				D						INSULATED SECTIONAL OVERHEAD DOOR
101A	3'-0" x 7'-0"	1-3/4"	SC-WOOD	STAIN	B	-	STEEL	PAINT	B	E-1	EXTERIOR INSULATED
101B	PAIR 3'-0" x 7'-0"	1-3/4"	SC-WOOD	STAIN	C	-	STEEL	PAINT	C	C-1	MASONRY FRAME
101C	3'-0" x 7'-0"	1-3/4"	SC-WOOD	STAIN	B	-	STEEL	PAINT	B	C-2	MASONRY FRAME
102	3'-0" x 7'-0"	1-3/4"	SC-WOOD	STAIN	A		STEEL	PAINT	A	T-1	
103	3'-0" x 7'-0"	1-3/4"	SC-WOOD	STAIN	B		STEEL	PAINT	B	O-1	
104	3'-0" x 7'-0"	1-3/4"	SC-WOOD	STAIN	A	-	STEEL	PAINT	A	P-1	
105	3'-0" x 7'-0"	1-3/4"	SC-WOOD	STAIN	A	-	STEEL	PAINT	A	P-1	
106A	PAIR 3'-0" x 7'-0"	1-3/4"	SC-WOOD	STAIN	C	-	STEEL	PAINT	C	C-1	MASONRY FRAME
106B	3'-0" x 7'-0"	1-3/4"	SC-WOOD	STAIN	B	-	STEEL	PAINT	A	C-2	

HARDWARE GROUPS (AS NOTED ON DOOR/ HARDWARE SCHEDULE)					
ALL HARDWARE TO BE ANSI GRADE 1 STANDARD					
E-1 ALUMINUM EXTERIOR DOOR	P-1 PASSAGE	T-1 TOILET	O-1 OFFICE	C-1 CLASSROOM	C-2 CLASSROOM
ADA - ENTRANCE LEVERSET-EXTERIOR-KEYPAD COMBINATION RIM PANIC EXIT DEVICE- INTERIOR BUTTS (3) CLOSER 34" x 34" ARMOR PLATE H/C-ACCESS THRESHOLD WEATHER SEAL/ SWEEP KICK-DOWN DOOR HOLD-OPEN	PUSH PLATE- PUSH SIDE PULL HANDLE- PULL SIDE BUTTS (3) CLOSER KICK-DOWN DOOR HOLD-OPEN 10" x 34" KICK PLATE-PUSH SIDE	ADA-PRIVACY LEVERSET BUTTS (3) WALL BUMPER DOOR BOTTOM SEAL 10" x 34" KICK PLATE	ADA-OFFICE LEVERSET BUTTS (3) WALL BUMPER DOOR BOTTOM SEAL 10" x 34" KICK PLATE	PRIMARY LEAF: ADA-CLASSROOM LEVERSET BUTTS (3) CLOSER KICK-DOWN DOOR HOLD-OPEN 34" x 34" ARMOR PLATE  SECONDARY LEAF: ADA-DUMMY LEVERSET BUTTS (3) 7" FLUSH DOOR SECURITY BOLT CLOSER KICK-DOWN DOOR HOLD-OPEN 34" x 34" ARMOR PLATE	ADA-CLASSROOM LEVERSET BUTTS (3) CLOSER KICK-DOWN DOOR HOLD-OPEN 34" x 34" ARMOR PLATE



1  
A2.1  
DOOR/ FRAME TYPES  
3/8" = 1'-0"

ROOM FINISH SCHEDULE										
NO.	NAME	FLOOR		WALLS				CEILING		REMARKS
		MATERIAL	BASE	NORTH	EAST	SOUTH	WEST	MATERIAL		
MAIN FLOOR										
100	Vehicle Storage	S.CONC.	--	①	②	① ③	②	MTL. BLDG.	VAULTED	CEILING HEIGHT VARIES- SEE PLAN & SECTIONS
101	Training Room	S.CONC.	VB-4"	C.M.U./PAINT	GYP./PAINT	M.R. GYP. / PAINT	GYP./PAINT	PCAST/PAINT	8'-8"	
102	Toilet	S.CONC.	VB-4"	C.M.U./PAINT	M.R. GYP. / PAINT	M.R. GYP./ PAINT/ PCT ④	M.R. GYP./ PAINT/ PCT ④	PCAST/PAINT	8'-8"	PORCELAIN TILE ON PLUMBING & SOUTH WALL
103	Office	S.CONC.	VB-4"	GYP./PAINT	GYP./PAINT	GYP./PAINT	GYP./PAINT	PCAST/PAINT	8'-8"	
104	Women	S.CONC.	VB-4"	C.M.U./PAINT	M.R. GYP. / PAINT	M.R. GYP./ PAINT/ PCT ④	M.R. GYP./ PAINT/ PCT ④	PCAST/PAINT	8'-8"	PORCELAIN TILE ON PLUMBING & SOUTH WALL
105	Men	S.CONC.	VB-4"	C.M.U./PAINT	M.R. GYP./ PAINT/ PCT ④	M.R. GYP./ PAINT/ PCT ④	C.M.U./PAINT	PCAST/PAINT	8'-8"	PORCELAIN TILE ON PLUMBING & SOUTH WALL
106	Utility Room	S.CONC.	VB-4"	GYP./PAINT	GYP./PAINT	C.M.U./PAINT	C.M.U./PAINT	PCAST/PAINT	8'-8"	

FINISH LEGEND  
DRYWALL / PAINTING / WALL FINISHES:

GYP./ PAINT- PAINT ON FINISHED/ PREP'D GYP. FINISHED SURFACE.  
M.R. GYP./ PAINT- PAINT ON FINISHED/ PREP'D GYP. FINISHED SURFACE.  
MOISTURE-RESISTANT GYP BOARD

PCT- POCELAIN CERAMIC TILE OVER 5/8" THICKNESS  
CEMENT BOARD

FLOORING:  
S. CONC.- POLISHED, SEALED CONCRETE FINISH  
PCT PORCELAIN CERAMIC TILE

CEILINGS:

PCAST/PAINT- PRECAST CONCRETE PLANK CEILING, MEDIUM TEXTURE & PAINT  
MTL BLDG.- INSULATION SYSTEM & STEEL FRAME OF METAL BUILDING

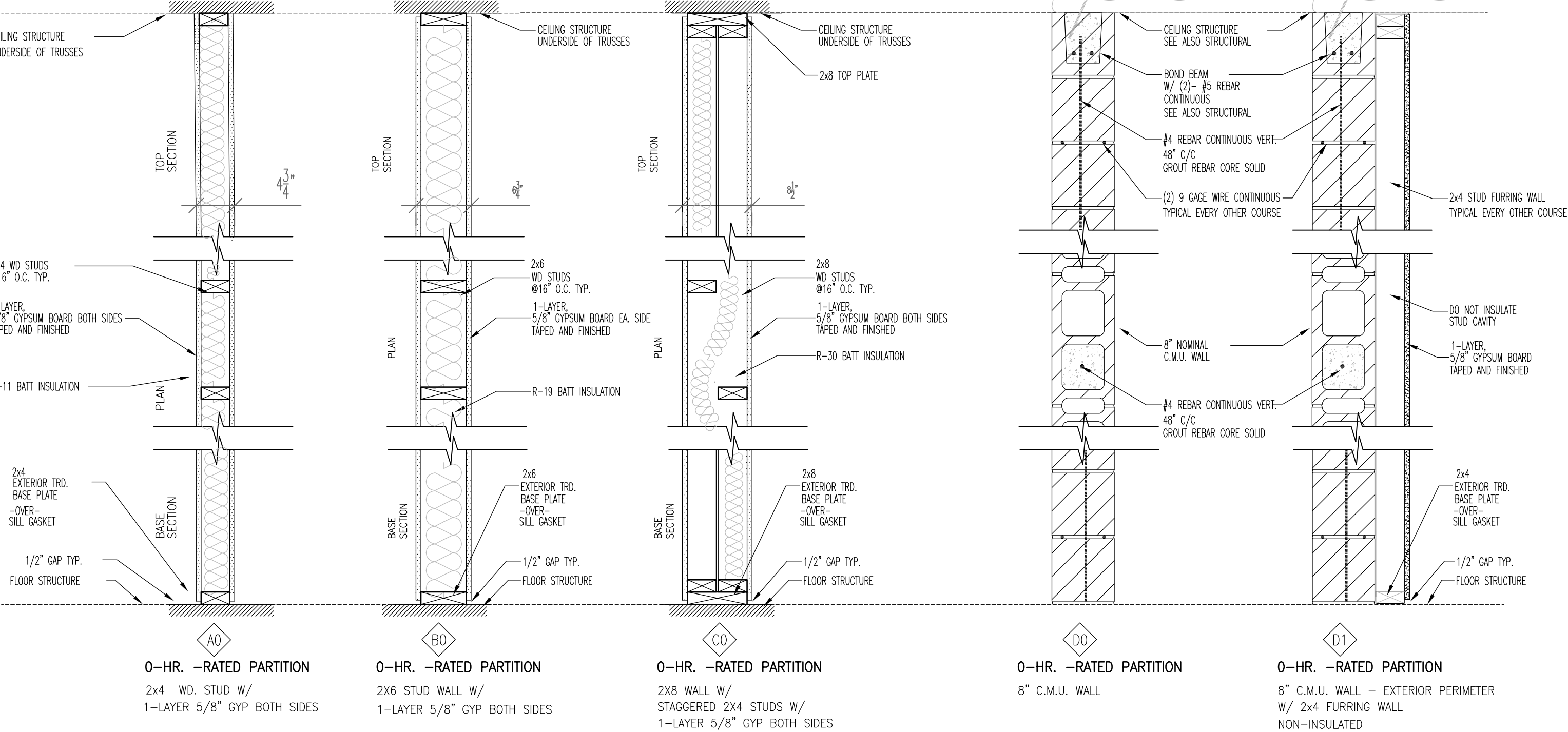
BASE:  
VB-4" 4" VINYL BASE

KEYED NOTES

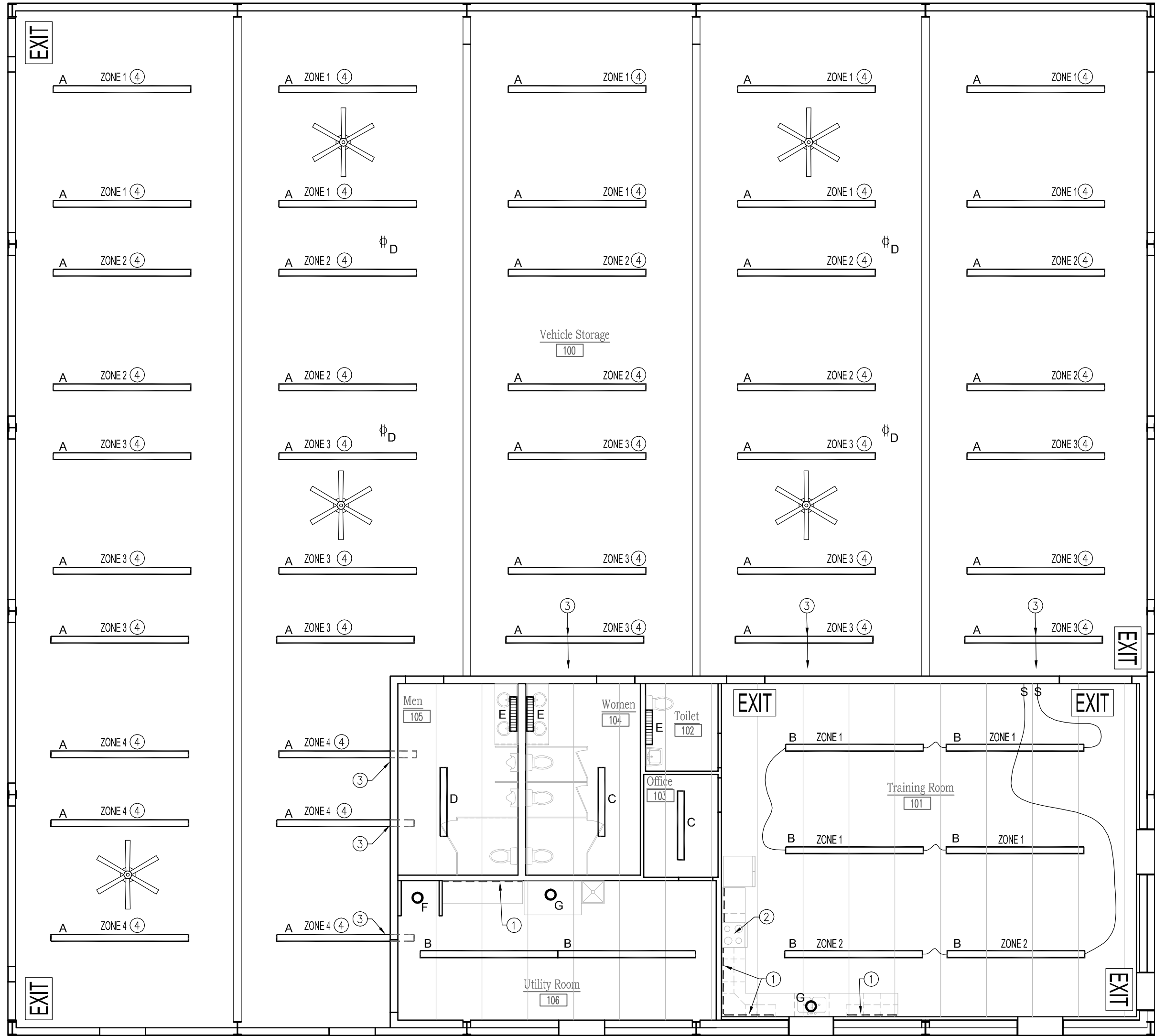
- METAL BUILDING WALL TO RECEIVE 8'-0" HEIGHT PAINTED 3/4" A-C PLYWOOD  
METAL BUILDING LINER PANEL ABOVE PLYWOOD
- METAL BUILDING WALL TO RECEIVE METAL BUILDING LINER PANEL- ENTIRE WALL
- C.M.U. WALL- MEZZ. FINISHED FLOOR & BELOW- PAINT FINISH
- CERAMIC TILE FINISH WALL- 6'-4" HEIGHT

FINISH NOTES

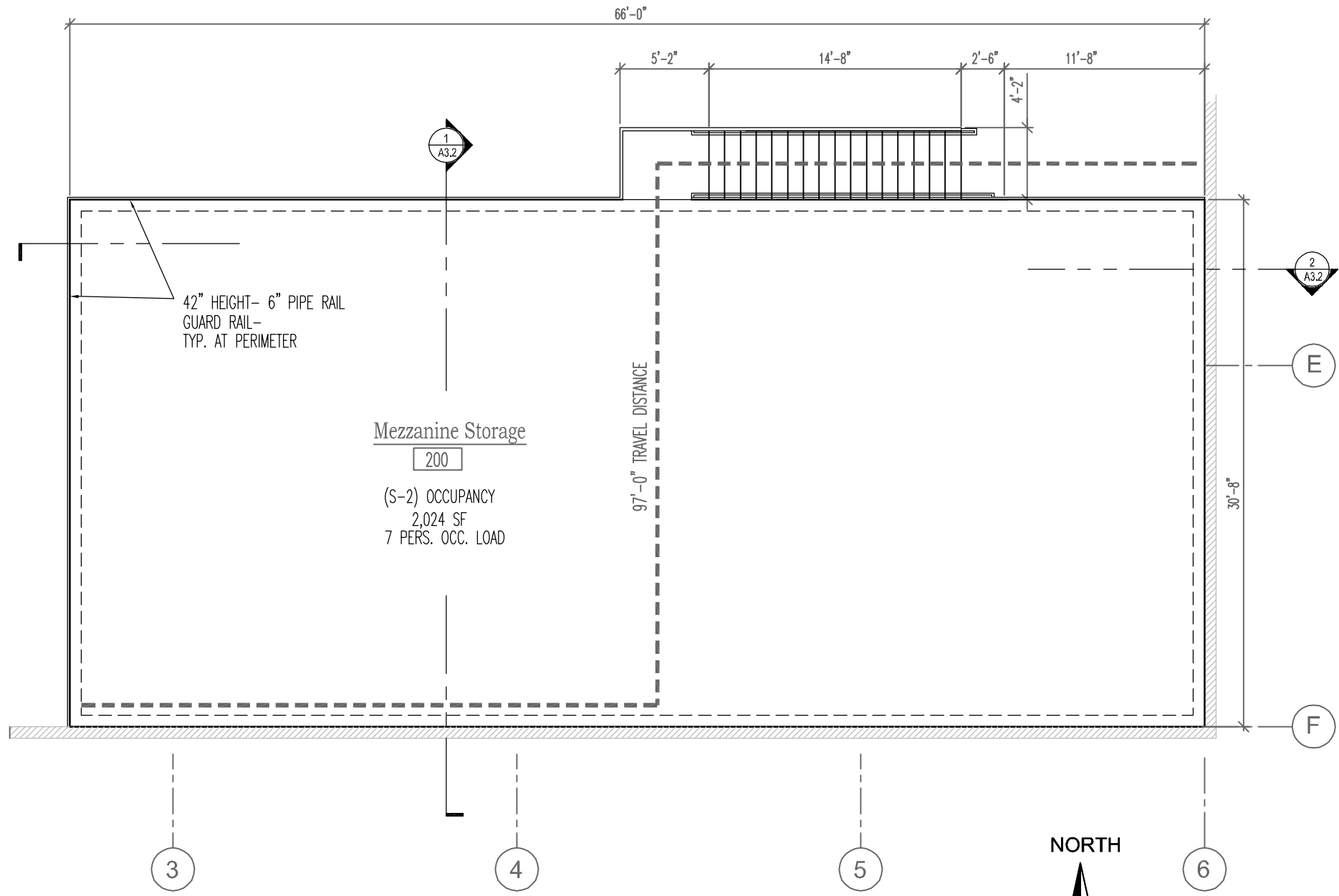
- PATCH AND REPAIR ALL EXISTING WALL AND CEILING SURFACES AS NECESSARY.  
ALL SURFACES WHICH ARE TO RECEIVE FINISH APPLICATION WILL BE SMOOTH, FREE FROM DEPRESSIONS, PROTRUSIONS, PITS, BUMPS, STREAKS AND VARIATION IN TEXTURE. IF SURFACES ARE NOT ACCEPTABLE TO RECEIVE FINISHES, NOTIFY GENERAL CONTRACTOR AND HAVE SURFACES CORRECTED PRIOR TO FINISH APPLICATION.
- ALL SURFACES DESIGNATED TO BE PAINTED SHALL RECEIVE MEDIUM-ORANGE PEEL SPRAY TEXTURE COAT AND TWO WELL-APPLIED FINISH COATS TO PROPERLY COVER SURFACE.
- ALL WALL PAINT TO BE SATIN FINISH. ALL TRIM WHERE APPLICABLE TO BE SEMI-GLOSS. CEILINGS TO BE FLAT FINISH. CONTRACTOR TO PROVIDE TOP-QUALITY LATEX PAINTS FROM THE APPROVED PAINT MANUFACTURER. 3-COATS: PRIMER-TEXTURE & 2 COATS PAINT PROCESS TO BE APPLIED.
- STEEL DOOR FRAMES TO BE PAINTED SMOOTH, SEMI-GLOSS FINISH. FRAMES TO RECEIVE 3-COATS: PRIMER & 2 COATS PAINT PROCESS TO BE APPLIED.
- ALL MISCELLANEOUS GRILLES, ETC. OCCURRING ON WALLS OR CEILING SHALL BE PAINTED TO MATCH THE SURFACES ON WHICH THEY OCCUR UNLESS OTHERWISE NOTED. ALL METAL SURFACES SHALL BE PRIMED FOR PAINTING AND PAINTED WITH 2 COATS PAINT FINISH.



2  
A2.1  
Partition Types  
1" = 1'-0"



TYPICAL CEILING FINISHES  
UNDER PRECAST MEZZANINE:  
8'-8" CEILING  
MEDIUM ORANGE PEEL TEXTURE  
PAINTED FINISH



**GENERAL NOTES**

REFLECTED CEILING PLANS

1. ALL AREAS NOT SPECIFICALLY NOTED ON PLAN OTHERWISE SHALL RECEIVE PAINTED GYP CEILING AT HEIGHT OF STRUCTURE NOTED ON SECTIONS.

2. WORK SURFACE FOOTCANDLE LIGHTING REQUIREMENTS:

ROOM	FOOTCANDLES (MINIMUM @ 36" A.F.F.)
VEHICLE STORAGE	70
MEZZANINE	50
TOILETS	40
UTILITY ROOM	50
OFFICE & TRAINING ROOM	75
SHOW ROOM	50

**KEYED NOTES**

REFLECTED CEILING PLANS

① UNDER- UPPER CABINET LED CONTINUOUS TAPE LIGHTING

② FAN / LIGHT PROVIDED IN ABOVE-STOVE EXHAUST FAN. VENT FAN TO EXTERIOR.

③ CONTINUE GARAGE CEILING LIGHTING OVER THE MEZZANINE AREA. FOLLOW PREVAILING LIGHTING ARRANGEMENT. 3/A2.2- MEZZANINE LIGHTING PLAN

④ PROVIDE SWITCHING TO CONTROL LIGHTING (ON / OFF) PER NOTED ZONES

**LEGEND- Fixtures**

REFLECTED CEILING PLANS

A

12'-0" LENGTH LOW-PROFILE STRIP LED MOUNT LEVEL AT 17'-0" ABOVE FLOOR

B

12'-0" LENGTH LOW-PROFILE STRIP LED CEILING SURFACE MOUNTED

C

6'-0" LENGTH LOW-PROFILE STRIP LED CEILING SURFACE MOUNTED

D

20 AMP, CEILING-MOUNT OUTLET ON RETRACTABLE CORD REEL

E

30" LENGTH, LED WALL-MOUNT UTILITY SCONCE

F

4 " RECESSED, FIXED, NON-FIRE-RATED, LED CEILING SURFACE-MOUNT WATERPROOF

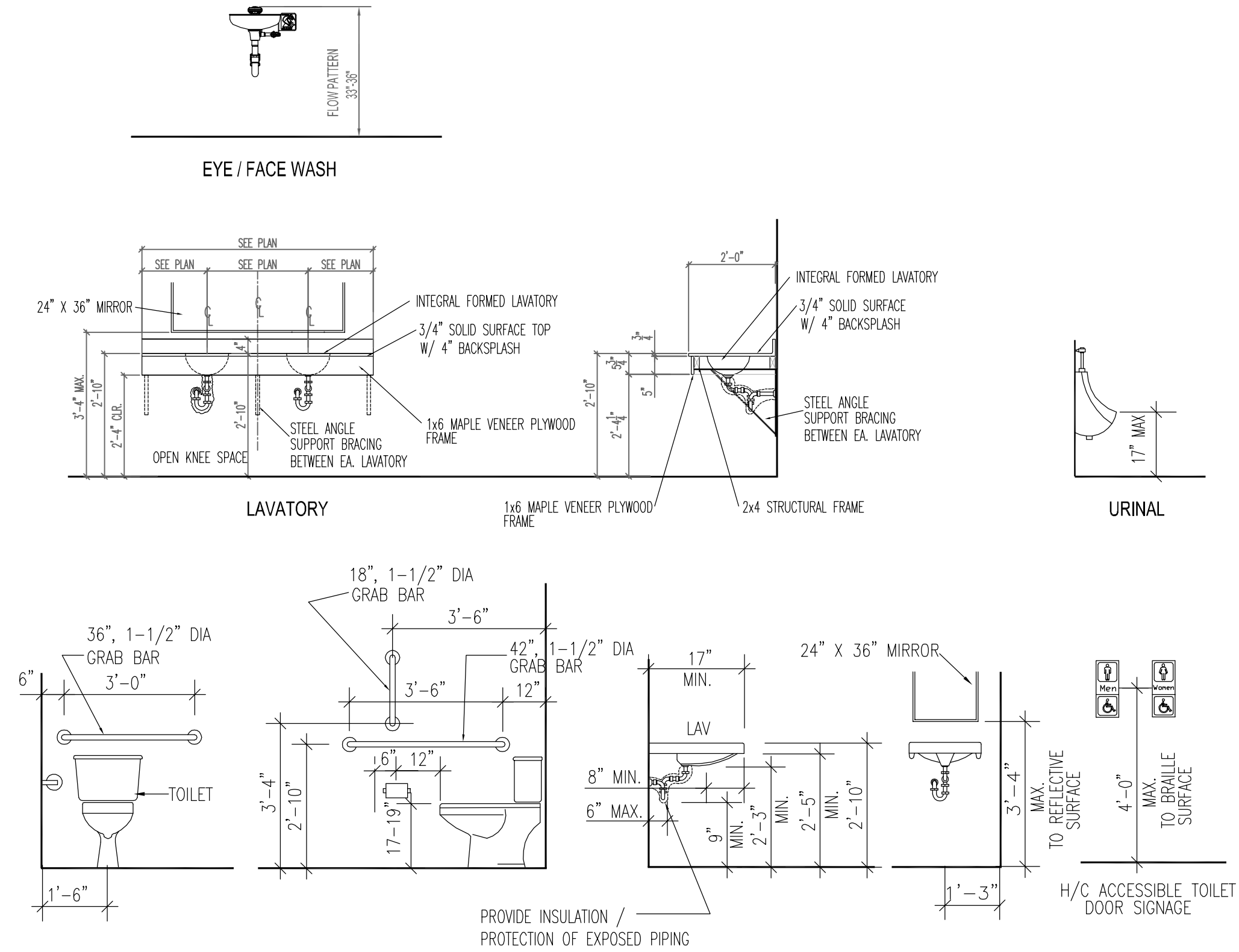
G

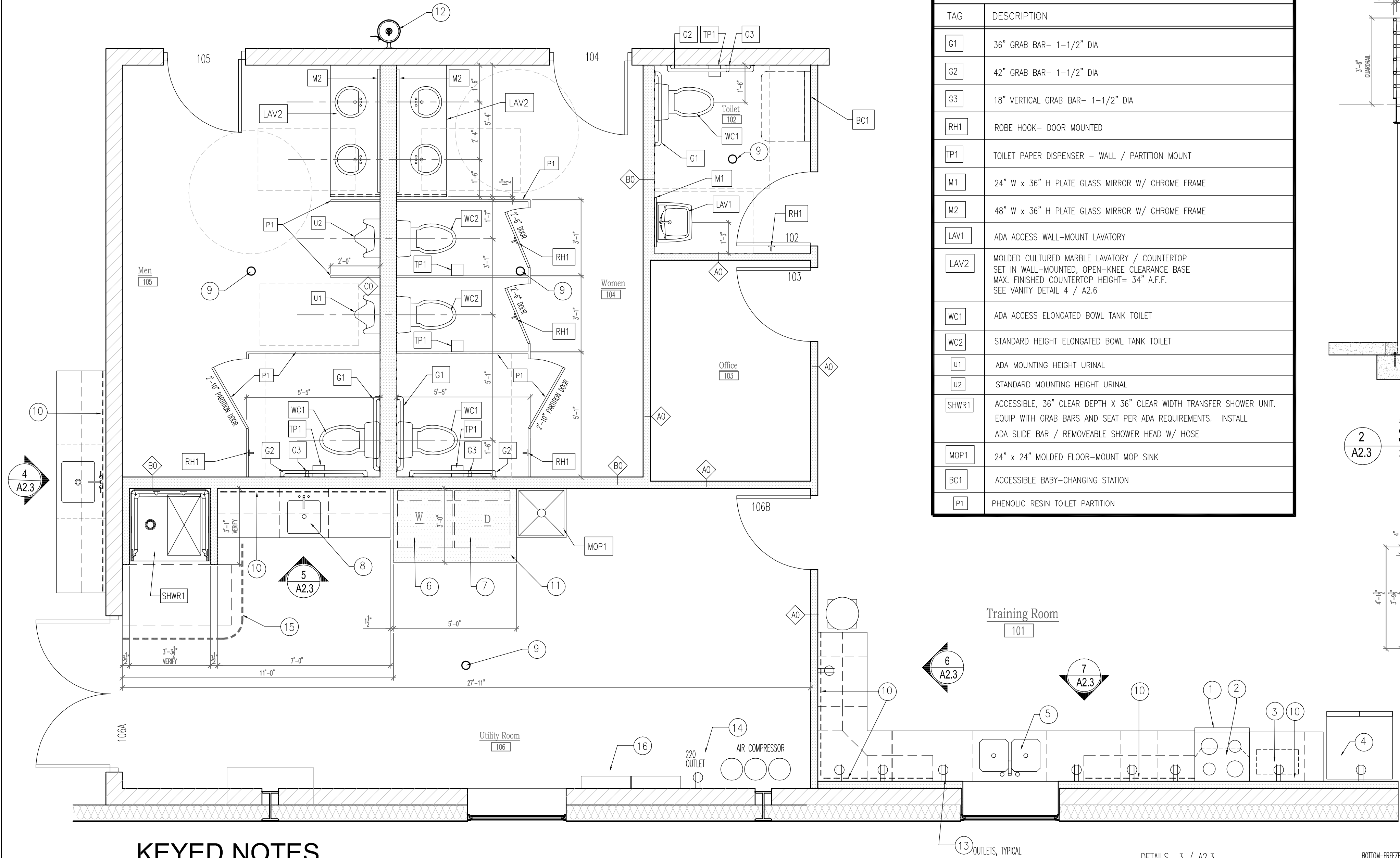
4 " SURFACE-MOUNT, FIXED, NON-FIRE-RATED, LED CEILING SURFACE-MOUNT

EXIT

EXIT LIGHT

SURFACE MOUNT FAN / LIGHT FIXTURE W/ EXTENSION STEM BIG-ASS FAN CO. MODEL ES6- 72" DIAMETER BLACK FINISH



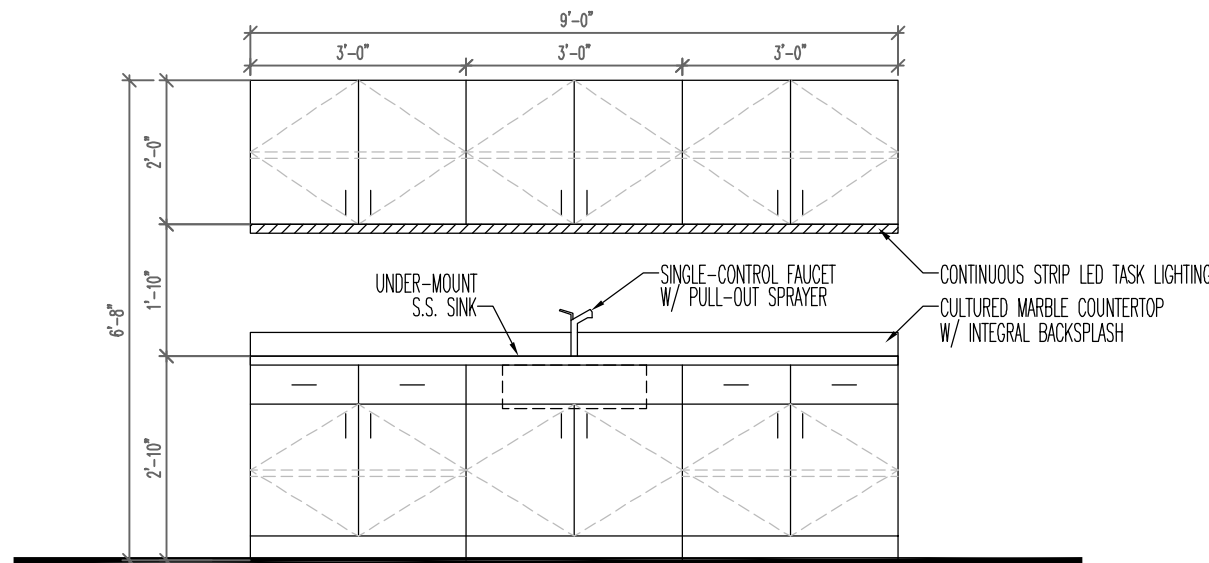


## KEYED NOTES

- 1 RESIDENTIAL-GRADE STOVE- FRONT CONTROLS
- 2 STOVE EXHAUST HOOD- VENT TO EXTERIOR
- 3 COUNTERTOP MICROWAVE UNIT
- 4 RESIDENTIAL-GRADE REFRIGERATOR UNIT- BOTTOM FREEZER
- 5 STAINLESS STEEL DOUBLE-BASIN KITCHEN SINK UNDER-COUNTER MOUNT
- 6 RESIDENTIAL WASHER- FRONT CONTROLS / FRONT LOAD
- 7 RESIDENTIAL DRYER- FRONT CONTROLS / FRONT LOAD
- 8 16x16x9" DEPTH STAINLESS STEEL SINGLE-BASIN UTILITY SINK UNDER-COUNTER MOUNT
- 9 FLOOR DRAIN
- 10 UNDER-UPPER CABINET SINGLE WHITE COLOR LED STRIP LIGHTING
- 11 6" THICK CONCRETE SLAB - PAD FOR WASHER / DRYER
- 12 EMERGENCY EYE / FACE WASH WASH STATION HAWS CORP MODEL MODEL 7260B-7270B: AXION MSR WALL MOUNT EYE/FACE WASH
- 13 ELECTRICAL SERVICE OUTLETS AS SHOWN- PROVIDE EACH ON 15AMP INDIVIDUAL CIRCUITS
- 14 220V ELECTRICAL SERVICE OUTLET FOR AIR COMPRESSOR
- 15 CEILING-MOUNT CURTAIN TRACK WITH CURTAIN
- 16 ELECTRIC SERVICE PANEL LOCATION

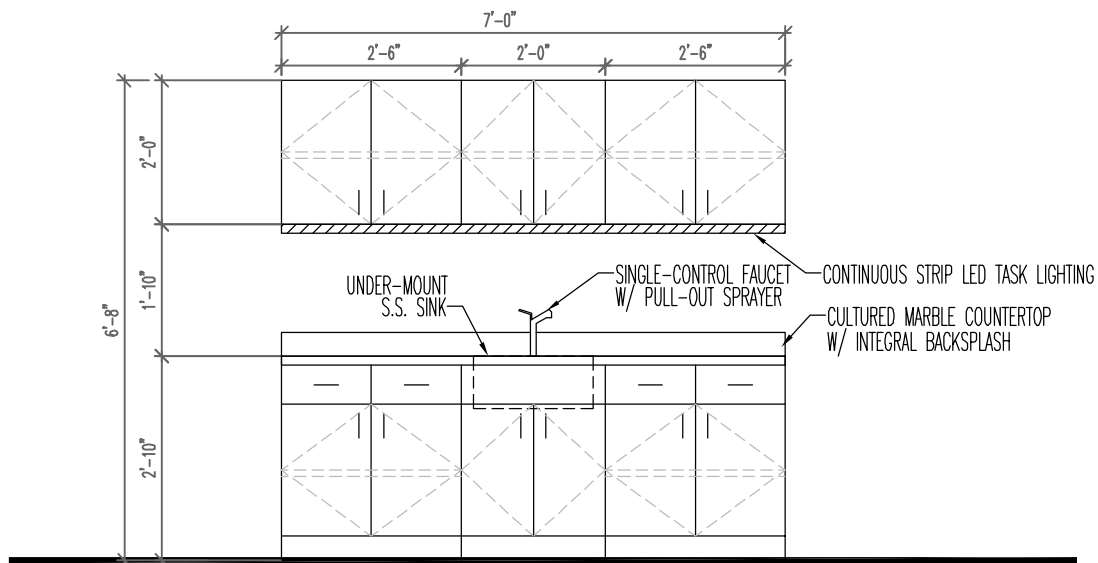
## Enlarged Plan

3/8" = 1'-0"



## Cabinetry Elevation - Vehicle Storage

3/8" = 1'-0"



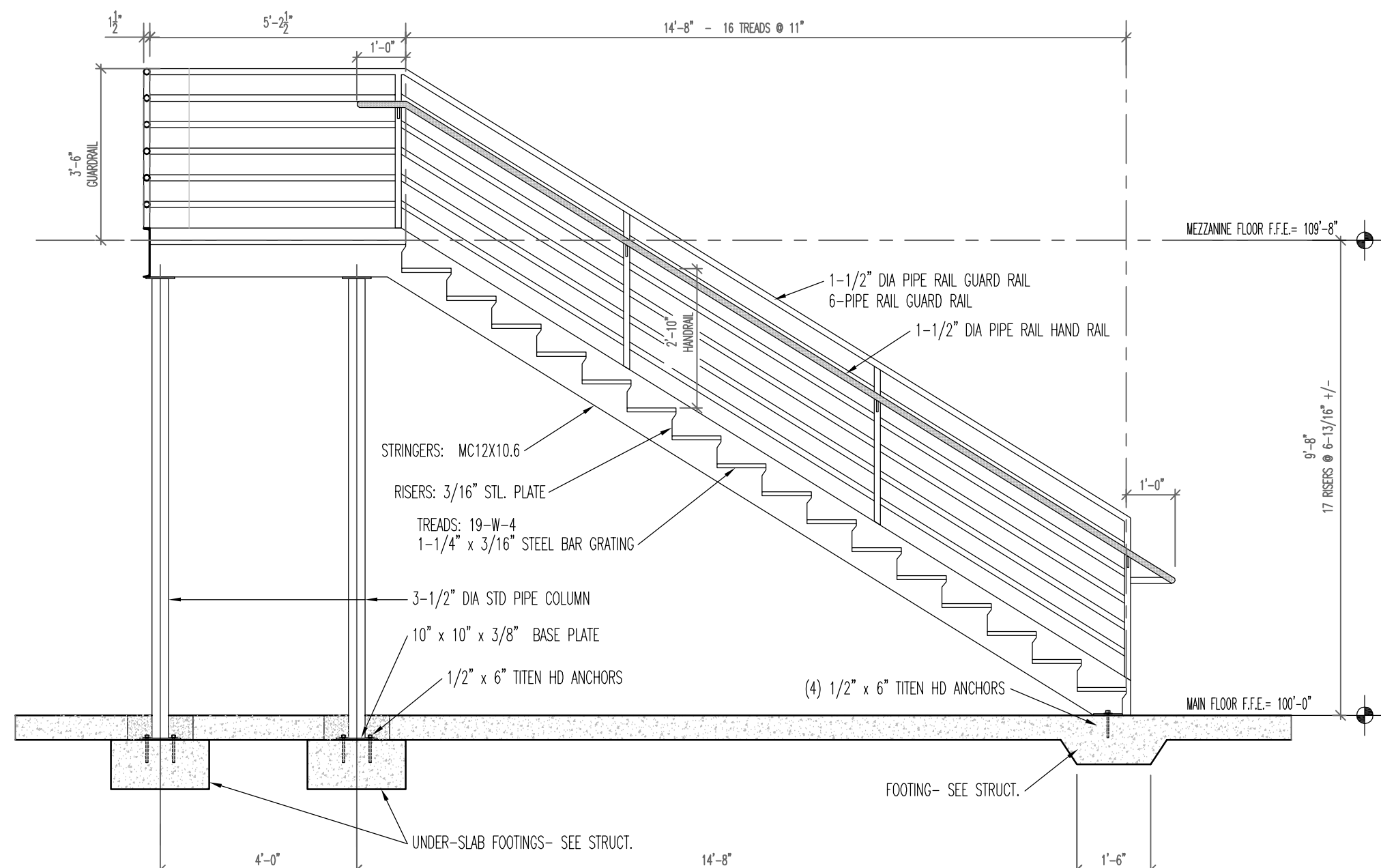
## Cabinetry Elevation- Utility Room

3/8" = 1'-0"

## FIXTURES & ACCESSORIES SCHEDULE

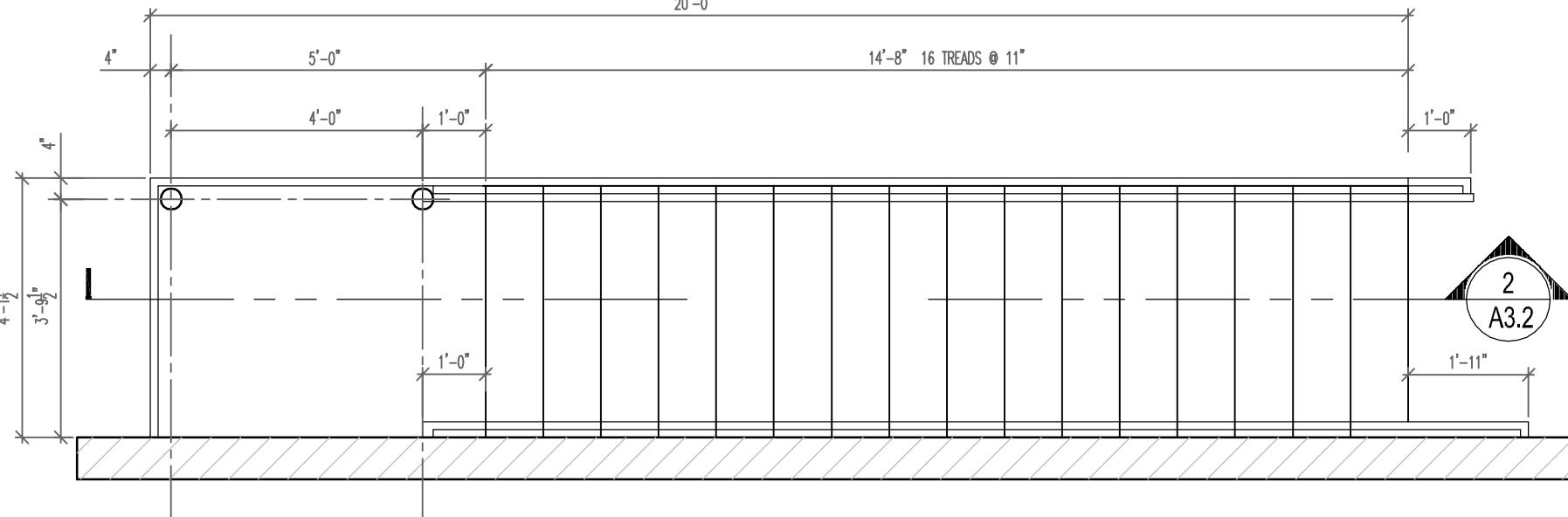
SEE 3 / A2.2 FOR STANDARD MOUNTING HEIGHTS

TAG	DESCRIPTION
G1	36" GRAB BAR- 1-1/2" DIA
G2	42" GRAB BAR- 1-1/2" DIA
G3	18" VERTICAL GRAB BAR- 1-1/2" DIA
RH1	ROBE HOOK- DOOR MOUNTED
TP1	TOILET PAPER DISPENSER - WALL / PARTITION MOUNT
M1	24" W x 36" H PLATE GLASS MIRROR W/ CHROME FRAME
M2	48" W x 36" H PLATE GLASS MIRROR W/ CHROME FRAME
LAV1	ADA ACCESS WALL-MOUNT LAVATORY
LAV2	MOLDED CULTURED MARBLE LAVATORY / COUNTERTOP SET IN WALL-MOUNTED, OPEN-KNEE CLEARANCE BASE MAX. FINISHED COUNTERTOP HEIGHT= 34" A.F.F. SEE VANITY DETAIL 4 / A2.6
WC1	ADA ACCESS ELONGATED BOWL TANK TOILET
WC2	STANDARD HEIGHT ELONGATED BOWL TANK TOILET
U1	ADA MOUNTING HEIGHT URINAL
U2	STANDARD MOUNTING HEIGHT URINAL
SHWR1	ACCESSIBLE, 36" CLEAR DEPTH X 36" CLEAR WIDTH TRANSFER SHOWER UNIT. EQUIP WITH GRAB BARS AND SEAT PER ADA REQUIREMENTS. INSTALL ADA SLIDE BAR / REMOVEABLE SHOWER HEAD W/ HOSE
MOP1	24" x 24" MOLDED FLOOR-MOUNT MOP SINK
BC1	ACCESSIBLE BABY-CHANGING STATION
P1	PHENOLIC RESIN TOILET PARTITION



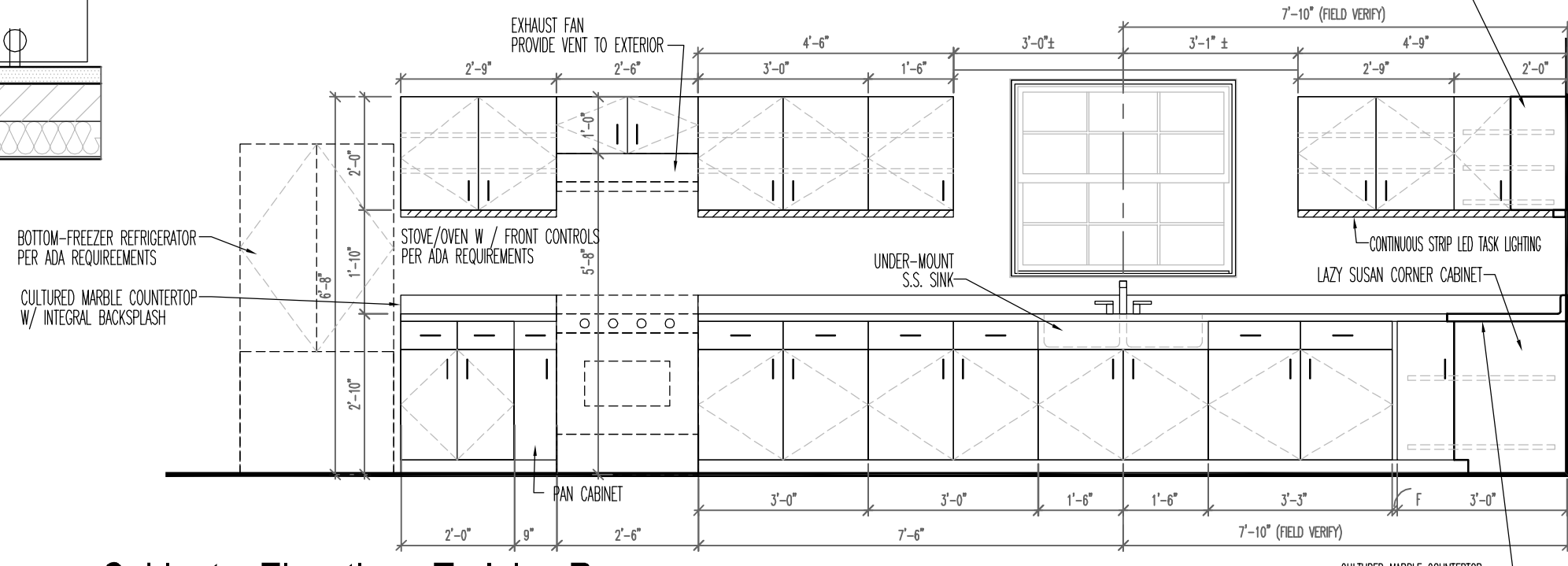
## Stair Section

3/8" = 1'-0"



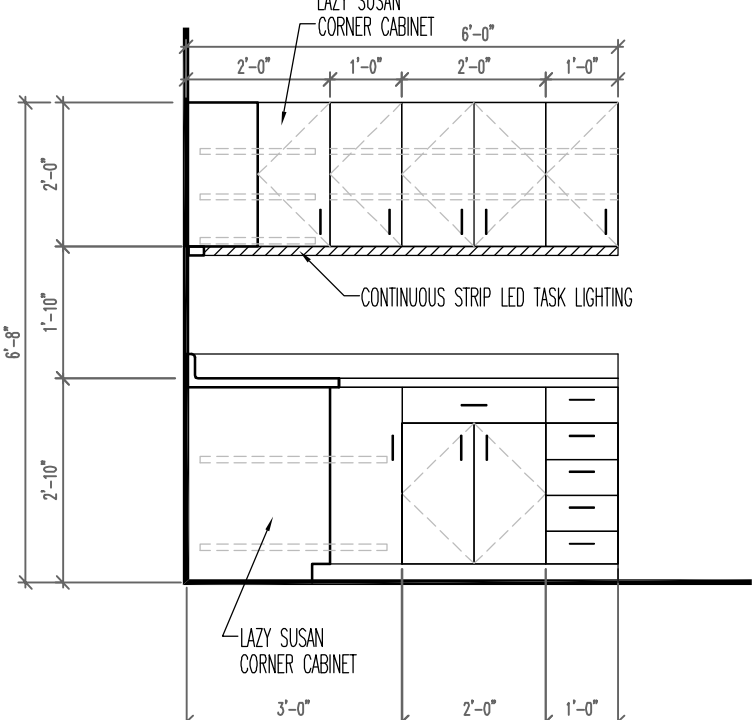
## Stair Detail

3/8" = 1'-0"



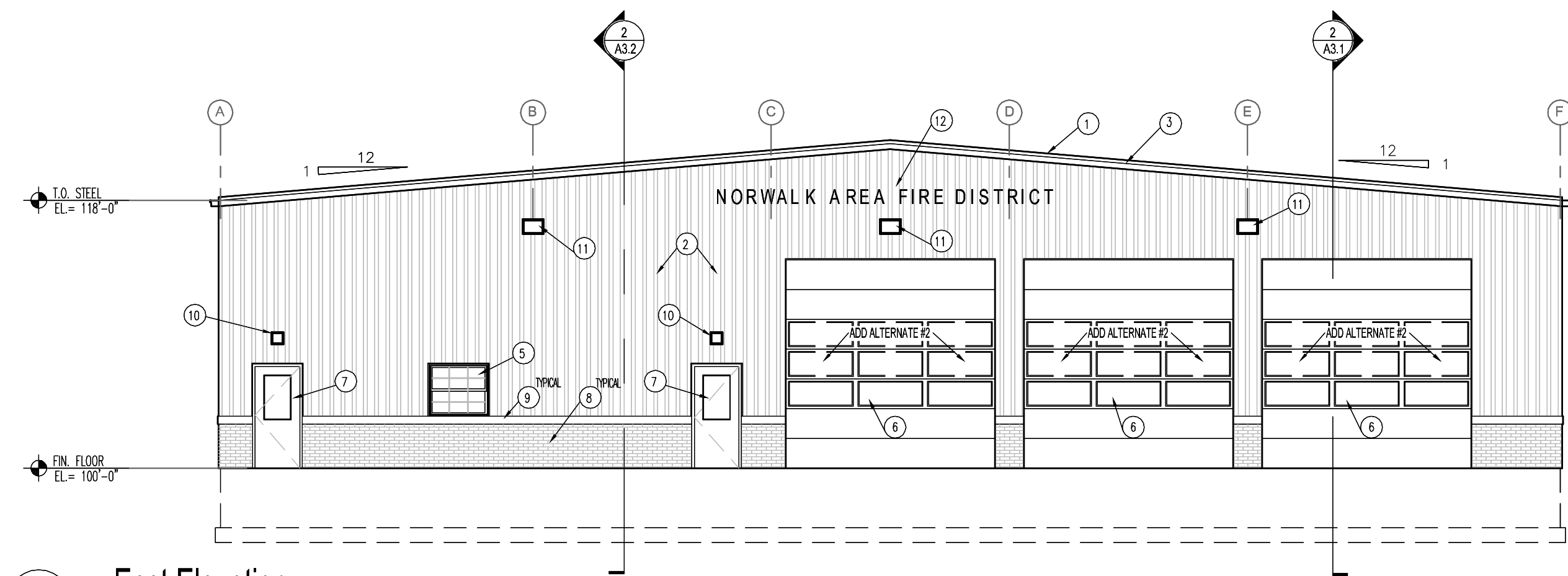
## Cabinetry Elevation - Training Room

3/8" = 1'-0"

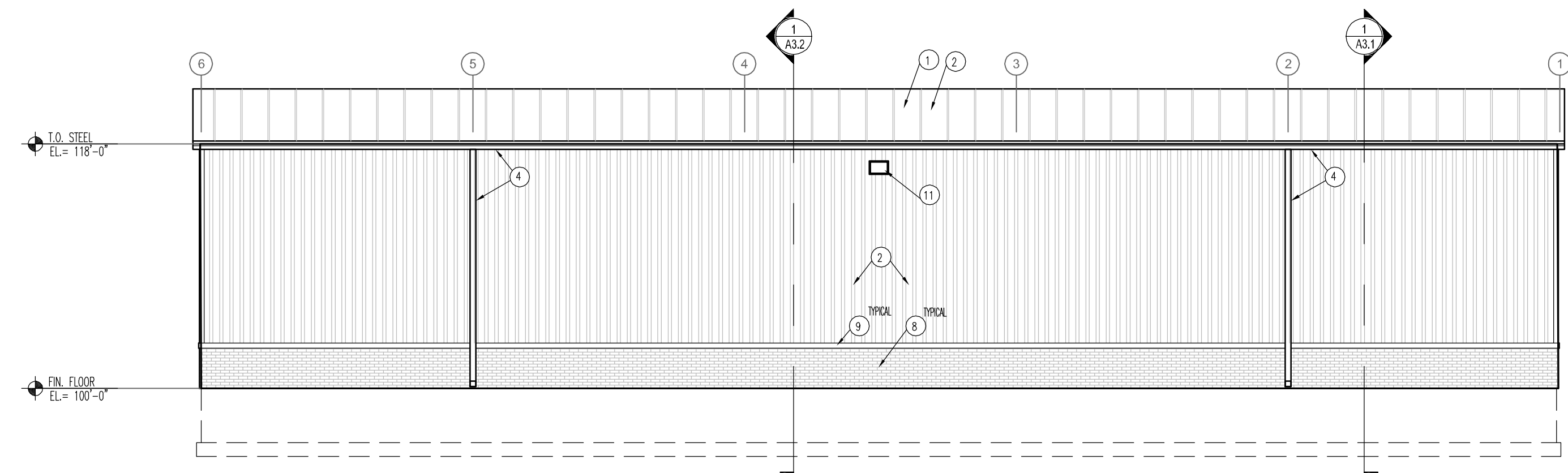


## Cabinetry Elevation- Training Room

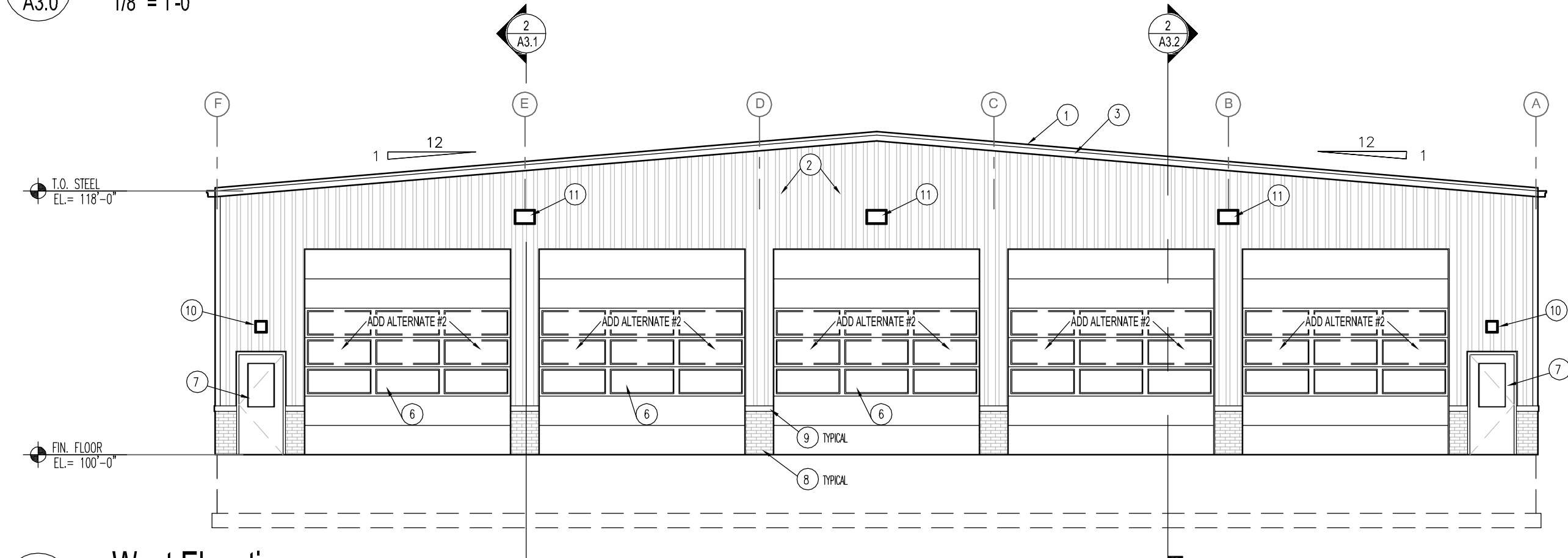
3/8" = 1'-0"



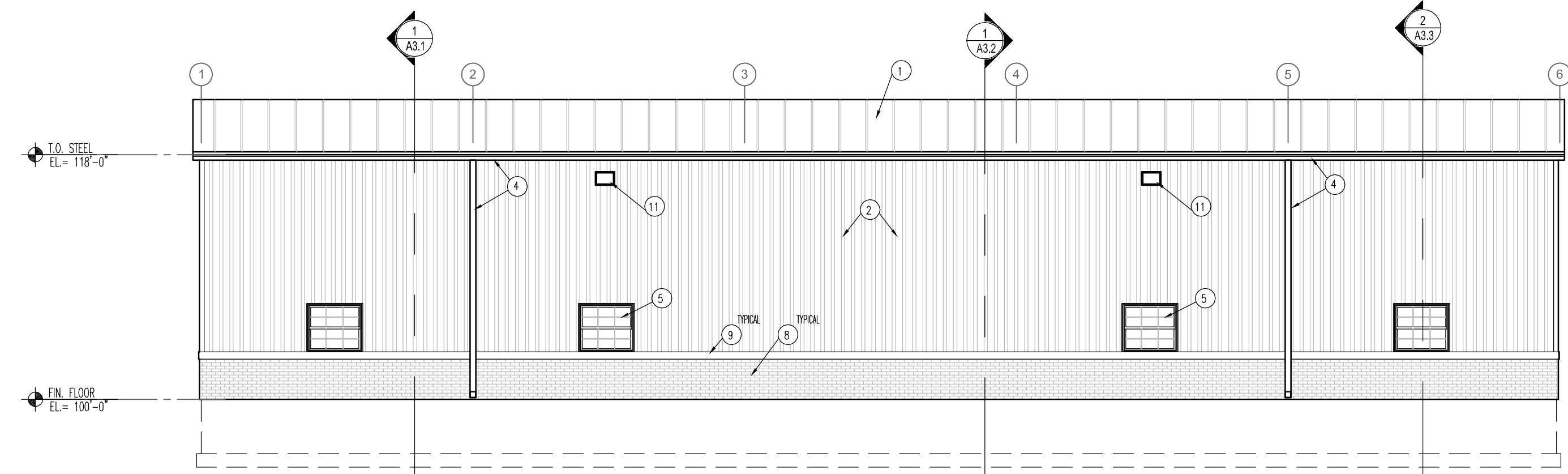
1  
A3.0  
East Elevation  
1/8" = 1'-0"



2  
A3.0  
North Elevation  
1/8" = 1'-0"



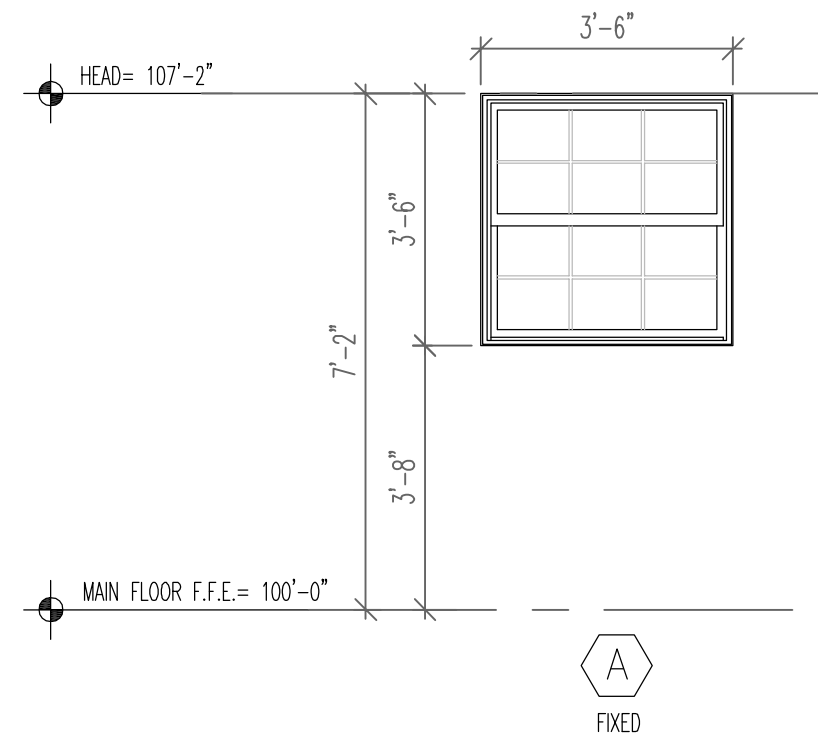
3  
A3.0  
West Elevation  
1/8" = 1'-0"



4  
A3.0  
South Elevation  
1/8" = 1'-0"

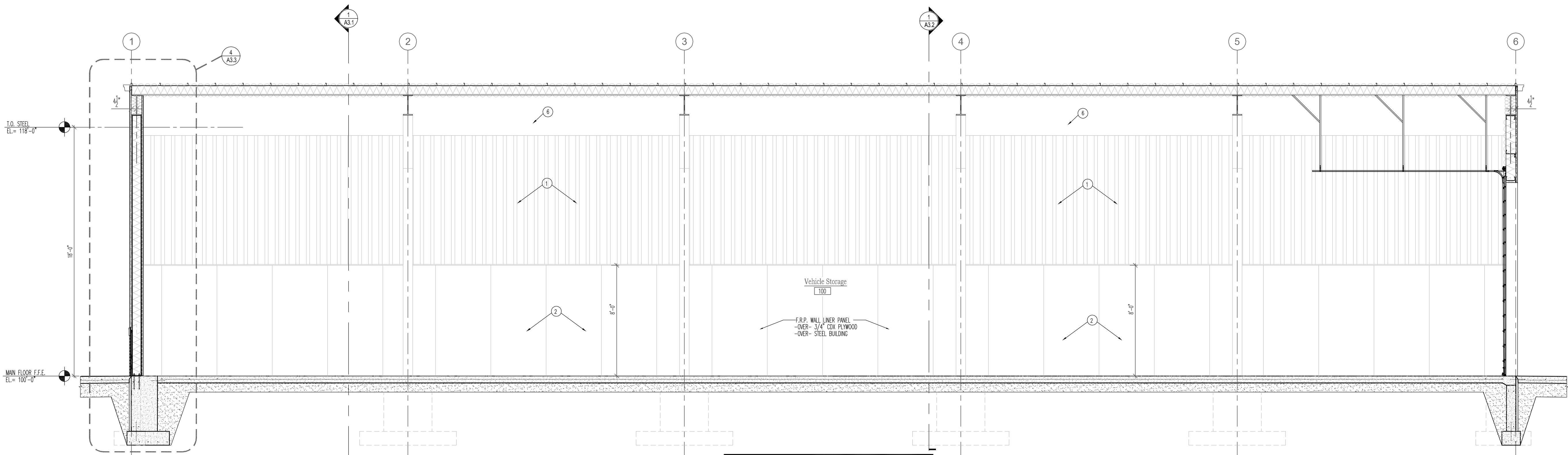
#### Keyed Notes- Exterior Elevations

- 24 GA. GALVALUME FINISH STANDING SEAM METAL ROOFING
- 26 GA. KYMAR FINISH PAINTED METAL PANEL
- PAINTED METAL FASCIA
- NEW PAINTED METAL GUTTER / DOWNSPOUT
- NEW EXTERIOR WINDOWS, TYPICAL - SEE SCHEDULE - 5/ A3.0
- INSULATED OVERHEAD GARAGE DOORS WITH VISION PANELS - SEE SCHEDULE  
ADD ALTERNATE #2: ADD ADDITIONAL VISION PANELS AS SHOWN
- STEEL FRAME INSULATED EXTERIOR DOOR - SEE SCHEDULE
- "SPEEDY-MASON" BRICK VENEER SYSTEM.
- "SPEEDY-MASON" STONE SILL VENEER SYSTEM.
- EXTERIOR EXIT LIGHTING
- ADJUSTABLE CUTOFF WALL PACK EXTERIOR FLOOD LIGHTING



FIBERGLASS EXTERIOR WINDOWS  
MARVIN ESSENTIAL SERIES  
1", NOMINAL, INSULATED, DOUBLE-GLAZED  
LOW "E", ARGON-GAS FILLED, CLEAR GLASS  
SHADING COEFFICIENT: 0.60 +/-  
SHGC = 0.38 +/-  
U/I = 0.30 MAXIMUM  
PROVIDE SAFETY GLASS WHERE REQUIRED

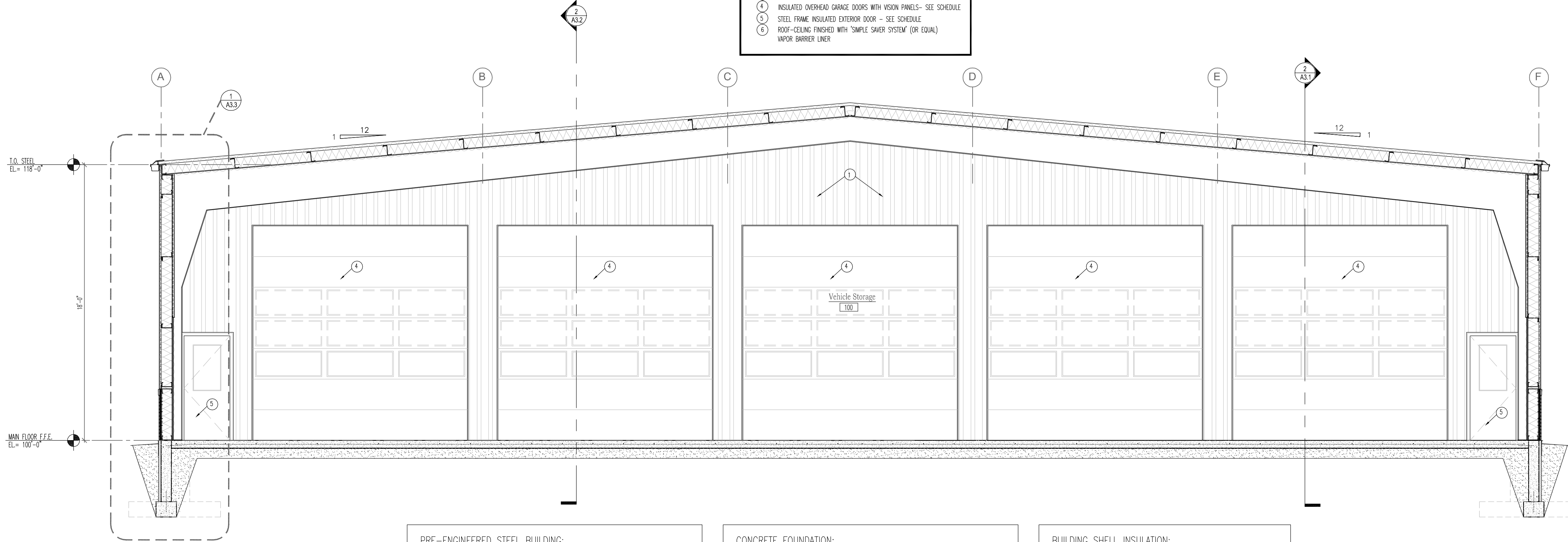
5  
A3.0  
Exterior Window Schedule  
3/8" = 1'-0"



2 Building Section- Looking North  
1/4" = 1'-0"

#### Keyed Notes- Building Sections

- 1 26 GA. KYNAR FINISH PAINTED METAL PANEL INTERIOR WALL FINISH
- 2 3/4" A-C PLYWOOD WALL FINISH- 4' x 8' SHEETS. PAINT FINISH
- 3 NEW EXTERIOR WINDOWS, TYPICAL- SEE SCHEDULE- 5/ A3.0
- 4 INSULATED OVERHEAD GARAGE DOORS WITH VISION PANELS- SEE SCHEDULE
- 5 STEEL FRAME INSULATED EXTERIOR DOOR - SEE SCHEDULE
- 6 ROOF-CEILING FINISHED WITH 'SIMPLE SAVER SYSTEM' (OR EQUAL)  
VAPOR BARRIER LINER

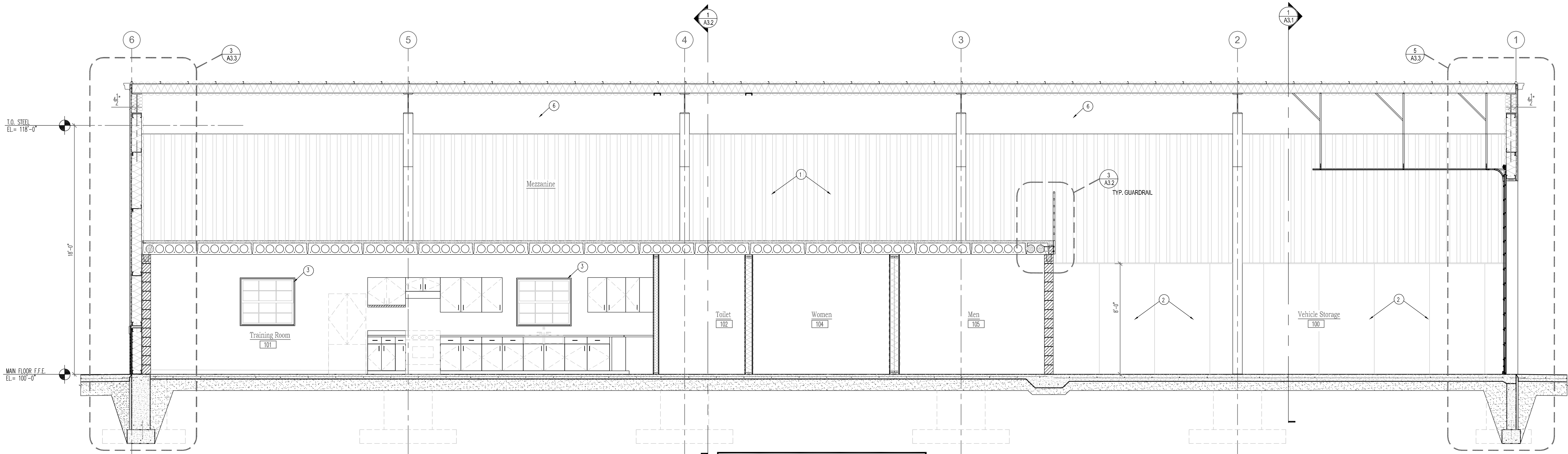


1 Building Section- Looking West  
1/4" = 1'-0"

PRE-ENGINEERED STEEL BUILDING:  
BUILDING STRUCTURE TO BE DESIGNED, ENGINEERED, AND SUPPLIED IN ITS ENTIRETY BY PRE-ENGINEERED STEEL MANUFACTURER. BUILDING SHALL BE SUBMITTED TO THE STATE OF WISCONSIN DSPS AS A COMPONENT SUBMITTAL. COMPLETE SUBMITTAL WITH REQUIRED DESIGN, CALCULATIONS, AND ENGINEER'S SEAL TO BE PROVIDED TO ARCHITECT FOR REVIEW AND SUBMITTAL TO WISCONSIN DSPS.

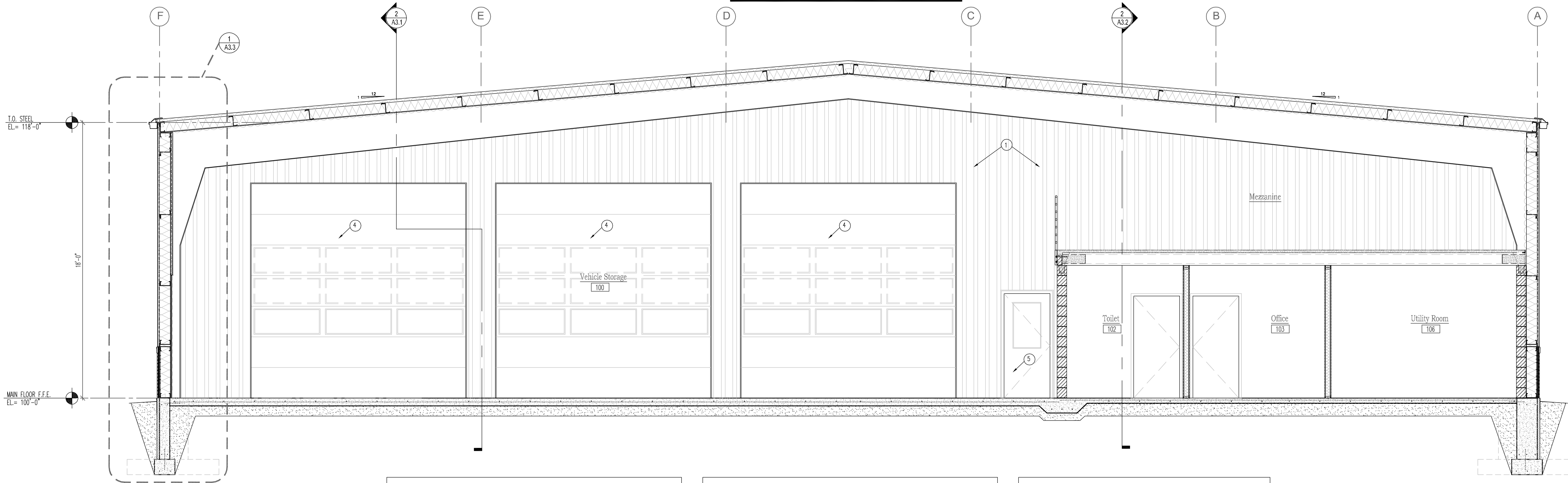
CONCRETE FOUNDATION:  
SEE FLOOR PLANS, FOUNDATION PLANS & WALL SECTIONS FOR DIMENSIONS & DETAILS

BUILDING SHELL INSULATION:  
SIMPLE-SAVER INSULATION SYSTEM:  
ROOF & WALLS: DOUBLE-LAYER INSULATION SYSTEM  
8" (PURLINS) + 3" (CONTINUOUS) SYSTEM  
W/ CONTINUOUS THERMAL BLOCKS (R=6.0)  
W/ CONTINUOUS VAPOR BARRIER LINER



2 Building Section- Looking South  
1/4" = 1'-0"

- Keyed Notes- Building Sections**
- 1 26 GA. KYNAR FINISH PAINTED METAL PANEL INTERIOR WALL FINISH
  - 2 3/4" A-C PLYWOOD WALL FINISH- 4' x 8' SHEETS. PAINT FINISH
  - 3 NEW EXTERIOR WINDOWS, TYPICAL- SEE SCHEDULE- 5/ A3.0
  - 4 INSULATED OVERHEAD GARAGE DOORS WITH VISION PANELS- SEE SCHEDULE
  - 5 STEEL FRAME INSULATED EXTERIOR DOOR - SEE SCHEDULE
  - 6 ROOF-CEILING FINISHED WITH 'SIMPLE SAVER SYSTEM' (OR EQUAL)  
VAPOR BARRIER LINER

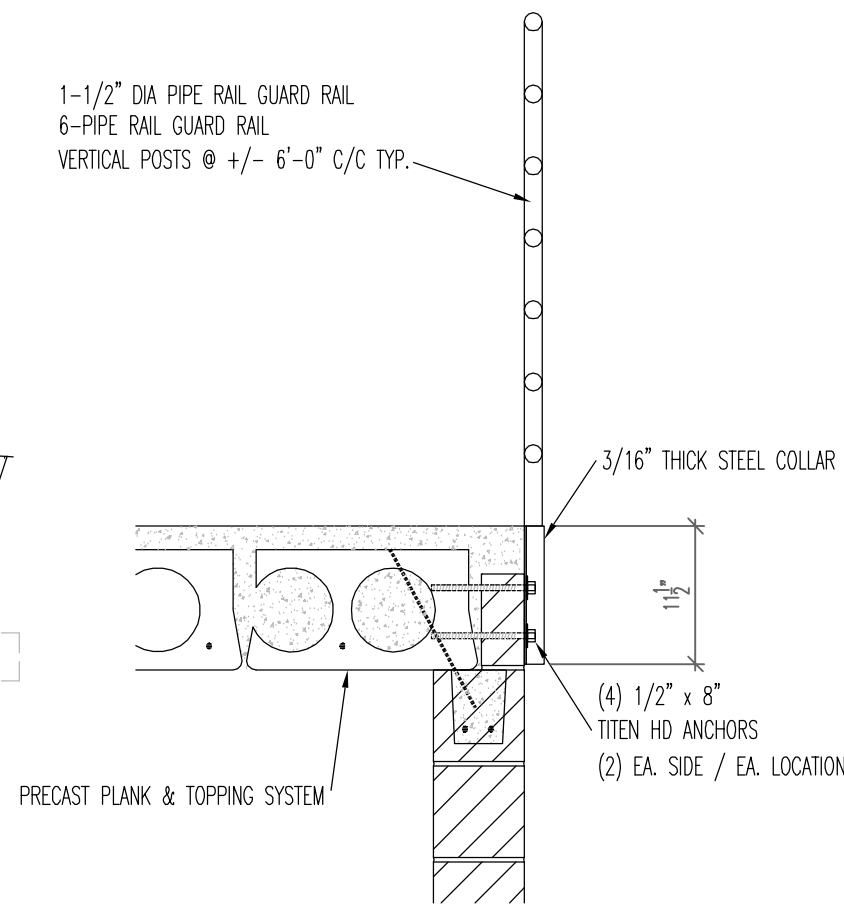


1 Building Section- Looking East  
1/4" = 1'-0"

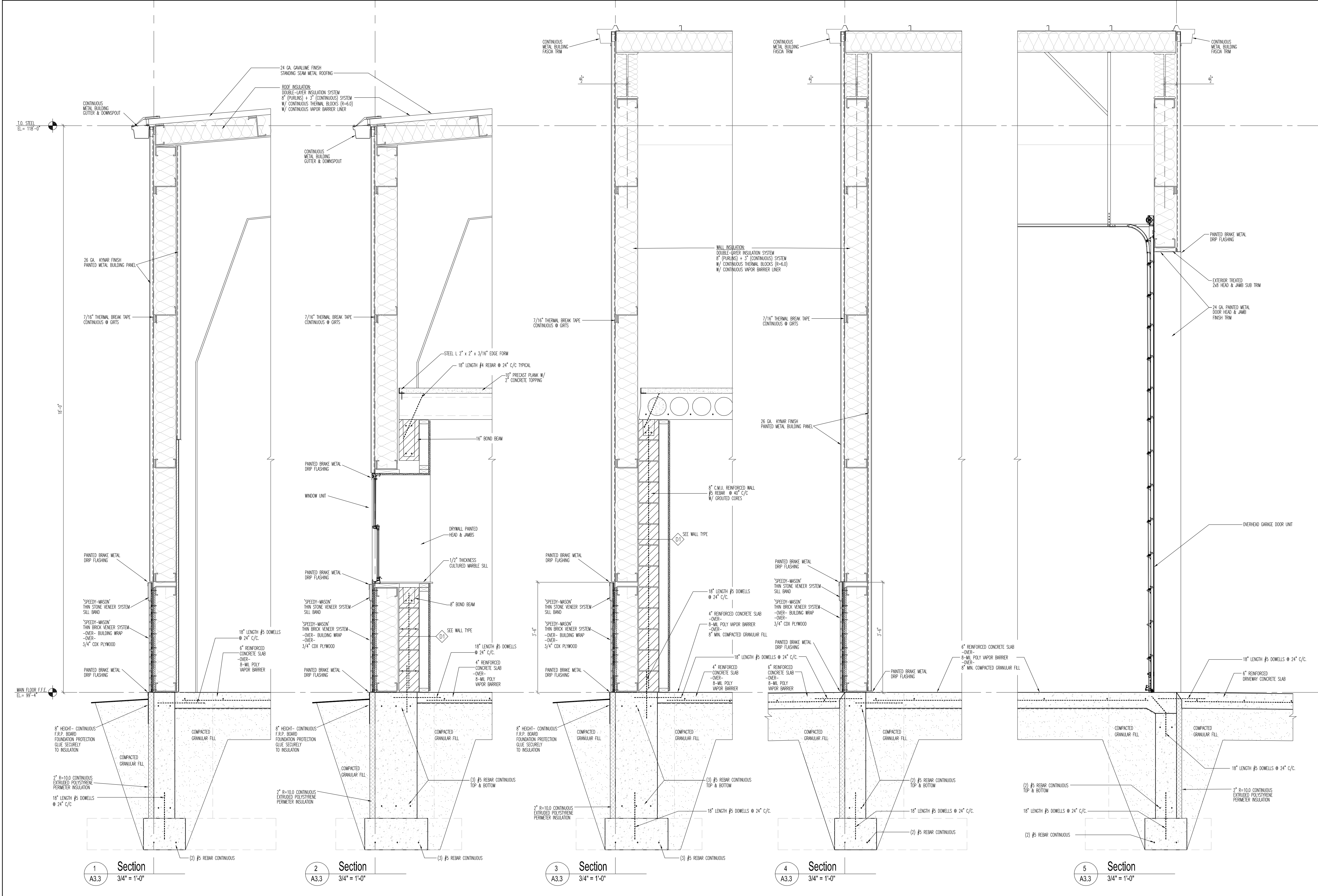
**PRE-ENGINEERED STEEL BUILDING:**  
BUILDING STRUCTURE TO BE DESIGNED, ENGINEERED, AND SUPPLIED IN ITS ENTIRETY BY PRE-ENGINEERED STEEL MANUFACTURER. BUILDING SHALL BE SUBMITTED TO THE STATE OF WISCONSIN DSPS AS A COMPONENT SUBMITTAL. COMPLETE SUBMITTAL WITH REQUIRED DESIGN, CALCULATIONS, AND ENGINEER'S SEAL TO BE PROVIDED TO ARCHITECT FOR REVIEW AND SUBMITTAL TO WISCONSIN DSPS.

**CONCRETE FOUNDATION:**  
SEE FLOOR PLANS, FOUNDATION PLANS & WALL SECTIONS FOR DIMENSIONS & DETAILS

**BUILDING SHELL INSULATION:**  
SIMPLE-SAVER INSULATION SYSTEM:  
ROOF & WALLS: DOUBLE-LAYER INSULATION SYSTEM  
8" (PURLINS) + 3" (CONTINUOUS) SYSTEM  
W/ CONTINUOUS THERMAL BLOCKS (R=6.0)  
W/ CONTINUOUS VAPOR BARRIER LINER



3 Guard Railing Detail  
3/4" = 1'-0"



CASHMAN ASSOCIATES, Inc.

PH: (608) 237-7443

FAX: (608) 237-7444

4798 County Road I

Sparta, WI 54656

gcashman@charter.net

Gregory M. Cashman, AIA

PROJECT:

Norwalk Area Fire District  
New Fire Station

212 Main Street  
Norwalk, WI 54648

LOCATION:

Norwalk Area Fire District  
Norwalk, WI  
Monroe County

DATE:

November 19, 2025

SHEET NUMBER:

A3.3

Wall Sections

REVISIONS

NO.	TITLE	DATE